

GTSTRUDL Student Edition 11
(Based on GTSTRUDL 30)
for Windows 7/Vista/XP
Quick Start

Technical Assistance: Computer Aided Structural Engineering Center (GTSTRUDL)
School of Civil and Environmental Engineering
Georgia Institute of Technology
Atlanta, Georgia 30332-0355 U.S.A.
Tel: 404-8942260, FAX: 404-8948014
email: "The CASE Center (GTSTRUDL)" <casec@ce.gatech.edu>

1. The following two PowerPoint Tutorial presentation files are located in the folder called "C:\Program Files\GTStrudl\30\Documentation", and may be run from the Windows Start menu by selecting:

Start ⇨ Programs ⇨ GTStrudl Student Edition 11 ⇨ Online Documentation ⇨ Tutorial #1
Start ⇨ Programs ⇨ GTStrudl Student Edition 11 ⇨ Online Documentation ⇨ Tutorial #2

- a. File "DemoSE11_1.ppt": This PowerPoint **Tutorial #1** demonstrates the use of the **Model Wizard** to create a simple Plane Frame structure using a predefined modeling template, and then using the GTMenu graphical user interface to display the structure and analysis results.
- b. File "DemoSE11_2.ppt": This PowerPoint **Tutorial #2** demonstrates the use of the **GTMenu Graphical User Interface** to create a simple Plane Truss structure, and then using GTMenu to display the structure and analysis results.

2. In the **GTSTRUDL User Guide: Getting Started**, Chapter 6, the following 15 example problems are described:

Example 1: Plane Truss
Example 2: Space Truss
Example 3: Continuous Beam/Plane Frame
Example 4: Plane Frame
Example 5: Space Frame
Example 6: Data Base Management
Example 7: Steel Design by the 1989 AISC ASD9 Code, 9th Edition
Example 8: Steel Design by the 1999 AISC LRFD3 Code, 3rd Edition
Example 9: Steel Design by the 2005 AISC Code, 13th Edition
Example 10: Reinforced Concrete Design by the ACI318-99 Design Code
Example 11: Plane Stress FEA of a Shear Wall
Example 12: Automatic Generation Using Object Copy (Not Applicable to Student Edition: ≥ 51 Joints)
Example 13: Sequential Construction Simulation Example (Not Applicable to Student Edition): ≥ 51 Jts.)
Example 14A: Response Spectrum Dynamic Analysis Example with Response Spectrum Earthquake Loads
Example 14B: Transient Dynamic Analysis Example with Transient Ground Motion Earthquake Loads

The GTSTRUDL command/data text files for each of the above 15 example problems are located in a folder called "C:\Program Files\Gtstrudl\Macros\Common\Getting Started Examples". It is recommended that these command files be copied to any user controlled folder other than the GTSTRUDL installation folder.

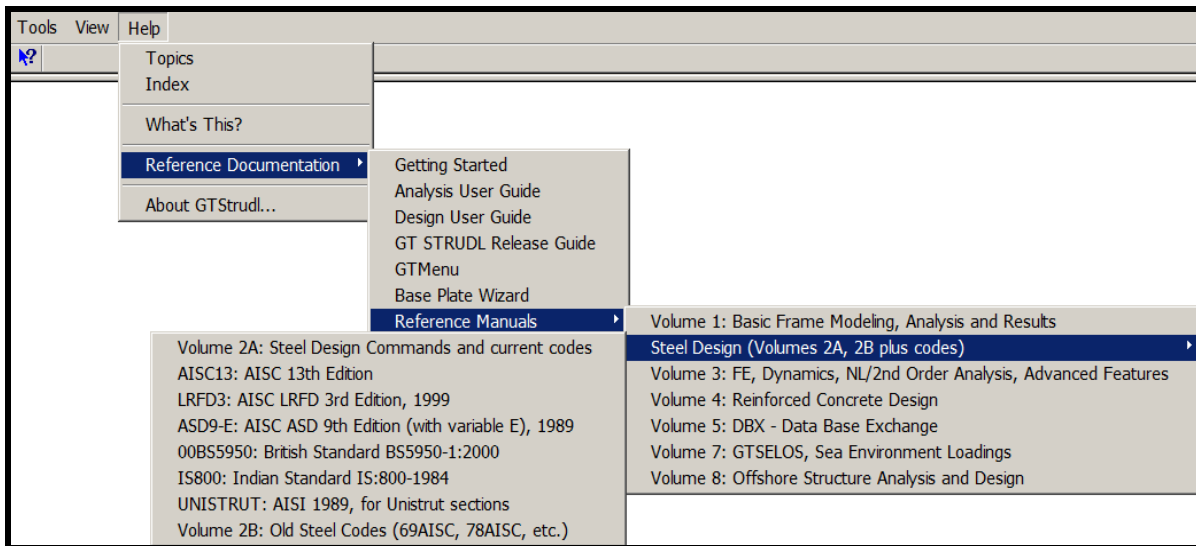
Recommendation: It is recommended that before trying to create a structure model using the GTMenu Graphical User Interface, the above example problems should be run using the commands and data in the above text files. This can be done as follows:

- a. Initiate the GTSTRUDL Student Edition 11 (based on GTSTRUDL 30) from the Windows Start menu by selecting:

Start ⇨ Programs ⇨ GTStrudl Student Edition 11 ⇨ GTStrudl Student Edition 11

- b. Select the **OK** option in the GTSTRUDL Start-Up Wizard Dialog. The GTSTRUDL text window will be displayed.
- c. **Drag and drop** any one of the above 15 example command/data text files into the GTSTRUDL text window. Then use GTMenu to display the model and analysis results.

3. GTSTRUDL user documentation may be accessed from the GTSTRUDL text window by selecting the following **Help > Reference Documentation** menu option:



4. The above referenced documentation which is located in the folder called "C:\Program Files\Gtstrudl\30\Documentation\pdf" are described as follows:

- a. **Getting Started** User Guide includes tutorials showing the use of the GTMenu Graphical User Interface, and includes examples of command/data text files
- b. **Analysis User Guide** describes the more commonly used modeling and linear static and linear dynamic frame and finite element analysis features of GTSTRUDL
- c. **Design User Guide** describes the more commonly used steel and reinforced concrete frame design features of GTSTRUDL
- d. **GTSTRUDL Release Guide**, Volume 1 describes new features in GTSTRUDL 30, error corrections, known errors, and prerelease features
- e. **GTMenu** (GTSTRUDL Release Guide, Volume 2) describes several tutorials showing the use of the GTMenu Graphical User Interface
- f. **Reference Manuals:** GTSTRUDL User Reference Manuals, Volumes 1, 2A, 2B, AISC13, 3, 4, 5, 7, 8, and other relevant manuals